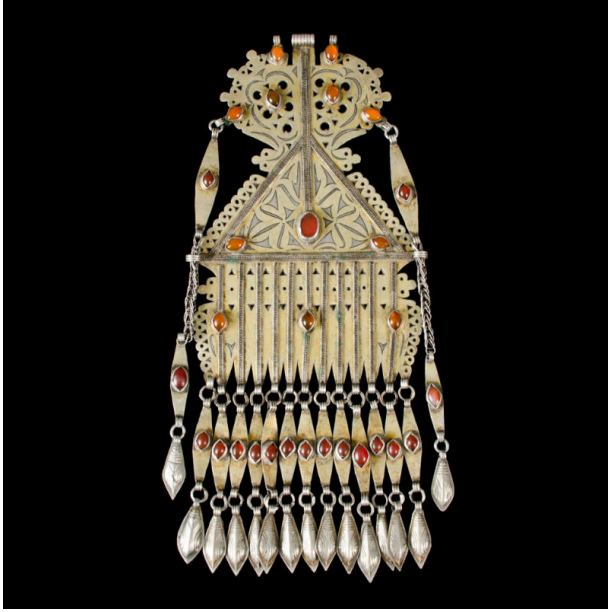


Basic Detail Report



Dimensions

11 7/16 × 5 7/8 in. (29 × 15 cm)

Pendant

Primary Maker

Artist not recorded

Medium

Metal (silver, brass), gemstones

Description

This pendant is mainly of silver with cutwork triangles and circles and a triangular area with brass inlay. This area contains twelve gemstones. From the main section, and attached by rings, are brass oblongs centered with similar gemstones. Attached to the oblongs are silver tear drops with slight engravings.