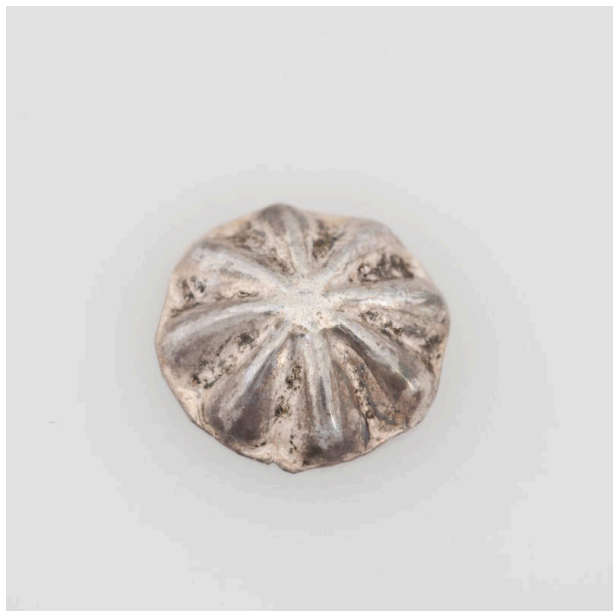


Basic Detail Report



Button

Date

20th century

Medium

silver metal

Description

Round Button With Star Design Consisting Of A Plain Center With Eight Repoussé Raised Lines Radiating From Center To Outer Edge.

Dimensions

9/16 × 1/2 × 3/16 in. (1.4288 × 1.27 × 0.4763 cm)