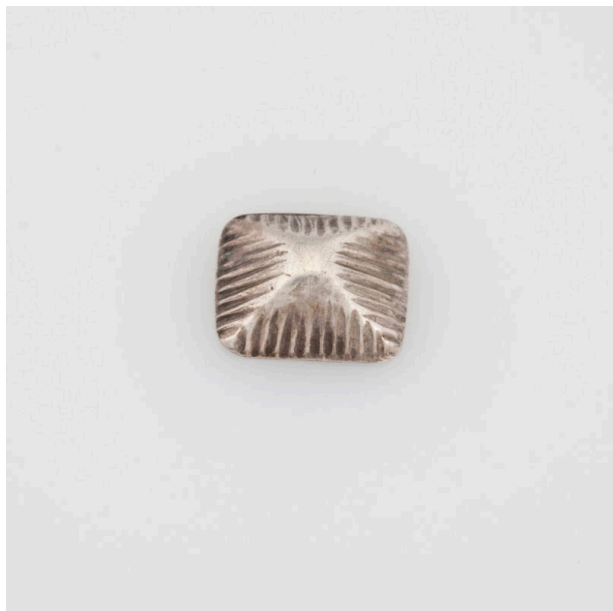


Basic Detail Report



Button

Date

20th Century

Medium

Silver metal

Description

Four-sided, pyramidal button. Repoussé line pattern extending from the top to the bottom.

Dimensions

Whole: $\frac{7}{16} \times \frac{1}{2} \times \frac{3}{16}$ in. ($1.1 \times 1.3 \times 0.5$ cm)