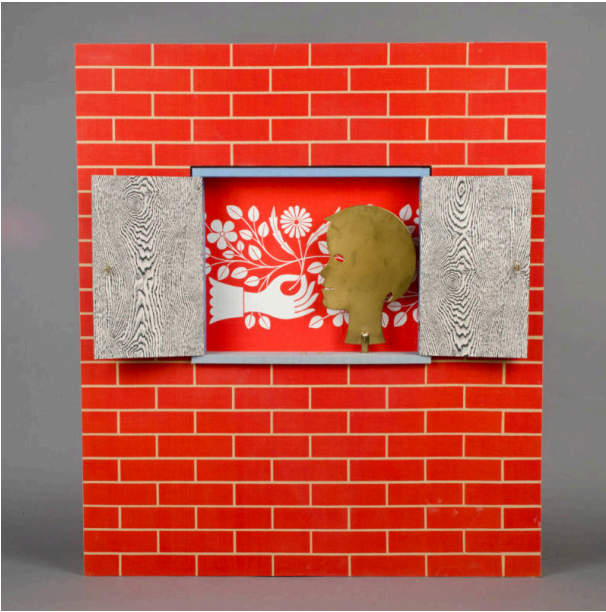


# Basic Detail Report

---



## Girard-designed textiles and silhouette sculpture

### Date

1970s

### Primary Maker

Alexander Girard

### Medium

Wood, cotton, metal (brass)

### Description

Fabric-covered wood frame covered with red brick print fabric, with a shadow box in the center. The shadow box

has hinged wood doors covered with black and white wood grain patterned fabric. Inside the box is a brass profile of a head. Behind, is a textile with white floral pattern and hand on red ground.

### Dimensions

54 15/16 × 47 5/8 × 5 1/8 in. (139.5 × 121 × 13 cm)