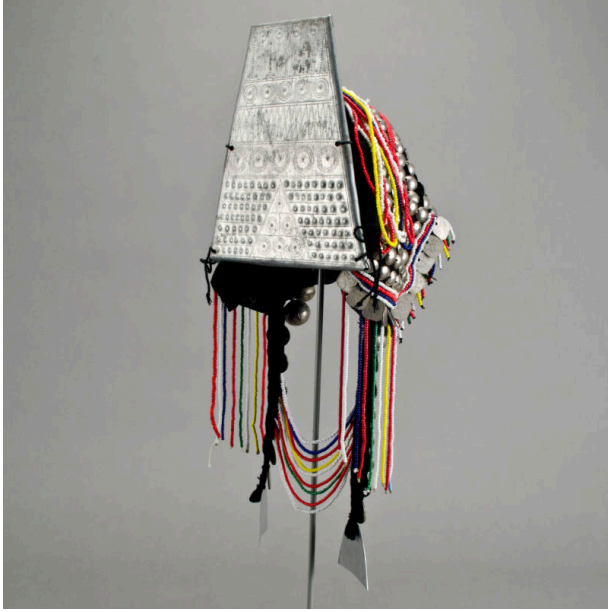


Basic Detail Report



Married woman's headdress

Date

21st century

Medium

Cotton, metal, glass beads, bamboo, feathers (chicken)

Description

Headdress is composed of a round cotton cap covered in aluminum studs (chukhaw) and framed around the face with hollow silver balls, coins and strands of beads. The large trapezoidal plate fixed at the back is wood covered in metal decorated in designs. Strips of cotton covered in coins, silver and beads hang down the front under the

wearer's chin. There are also additional decorations of pom-poms and dyed chicken feathers

Dimensions

24 × 11 7/16 × 9 7/16 in. (61 × 29 × 24 cm)