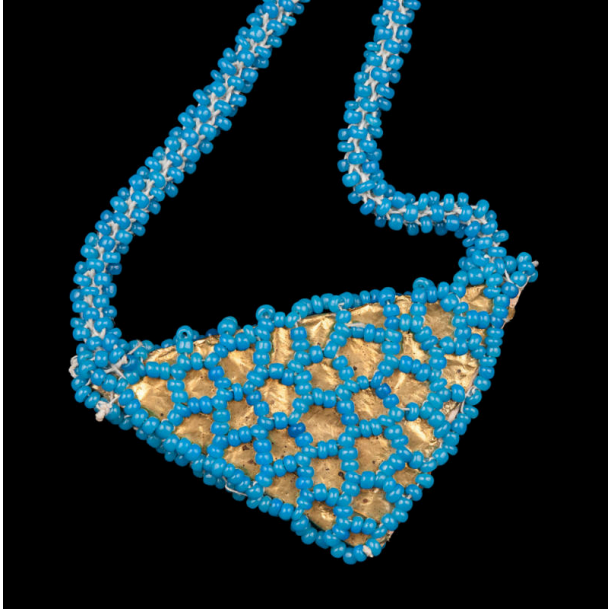


# Basic Detail Report

---



Overall: 23 5/8 x 1 15/16 in. (60 x 5 cm)

## Necklace with triangular amulet

### Date

ca. 1910, staff

### Primary Maker

Artist not recorded

### Medium

Glass beads, fiber, gold leaf, paper

### Description

Crocheted, strung. Round chain. Commercial beads. See vertical file

### Dimensions