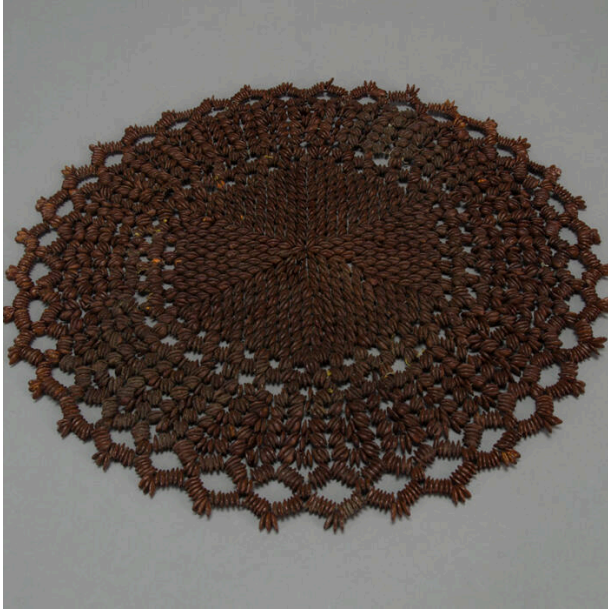


# Basic Detail Report

---



Overall: 1 15/16 x 12 in. (5 x 30.5 cm)

## Seed doily

### Primary Maker

Artist not recorded

### Medium

Seeds, nylon (monofilament) fishing line

### Description

Round doily of small, dark brown teardrop shaped seeds sewn together to make a lace-like piece with a 6-part center, surrounded by radiant semi-circular lines with a scalloped outside edge.

### Dimensions