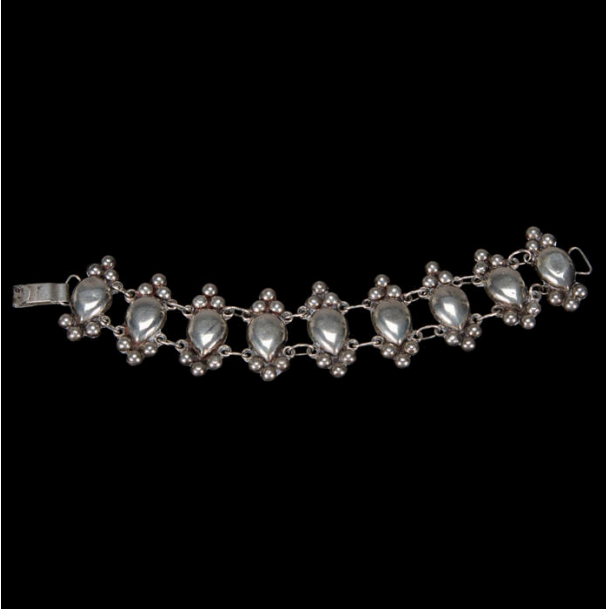


Basic Detail Report



Bracelet

Date

1940s - 1950s

Primary Maker

Artist not recorded

Medium

Metal (silver)

Description

Silver bracelet, elements linked by wire loops, bar and hook closure. Elements are teardrop shaped with three silver spheres top and bottom.

Dimensions

7 3/16 × 1 5/16 × 3/16 in. (18.3 × 3.3 × 0.4 cm)