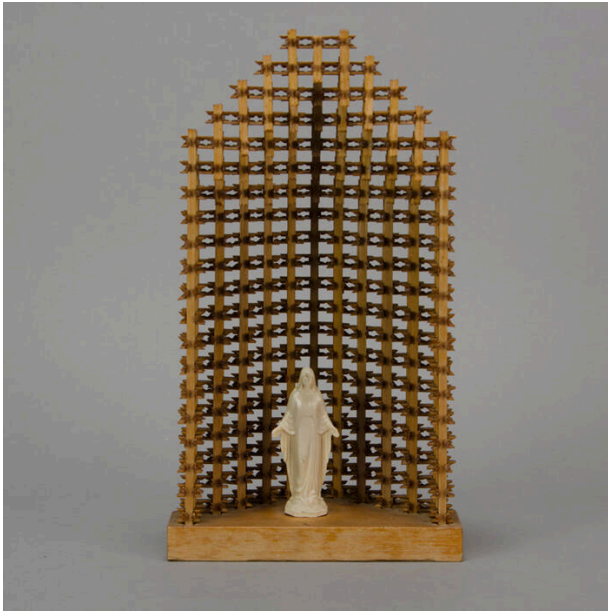


# Basic Detail Report

---



## Crown of thorns shrine

### Date

1961-1984

### Primary Maker

Sidney Freeman

### Medium

Wood

### Description

Interlocking, pieced wood splint shrine niche of medium-light wood on six sided, nearly triangular base that goes to a point in back and rises to arch in front.

### Dimensions

Overall: 11 9/16 x 6 7/16 x 4 in. (29.3 x 16.4 x 10.2 cm)