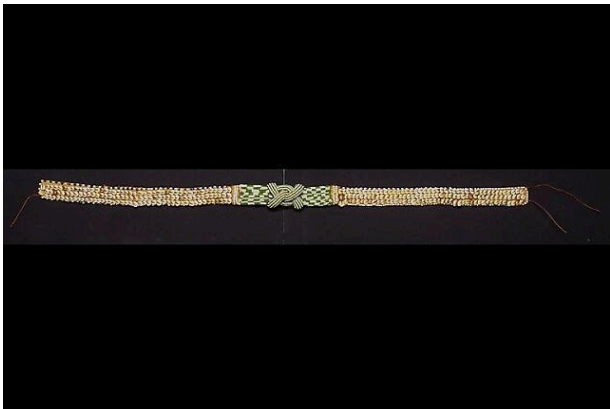


Basic Detail Report



Beaded Belt

Date

c. 1950-1980

Medium

Raffia palm, cowrie shells, glass beads

Description

Belt is decorated with cowry shells and glass beads in various symmetrical arrangements. Has a specially

designed center with a special beaded knot. The beaded area has checkerboard and striped designs. Has a woven raffia base; colors are white, blue, green, and raffia.

Dimensions

48 × 3 in. (121.9202 × 7.62 cm)