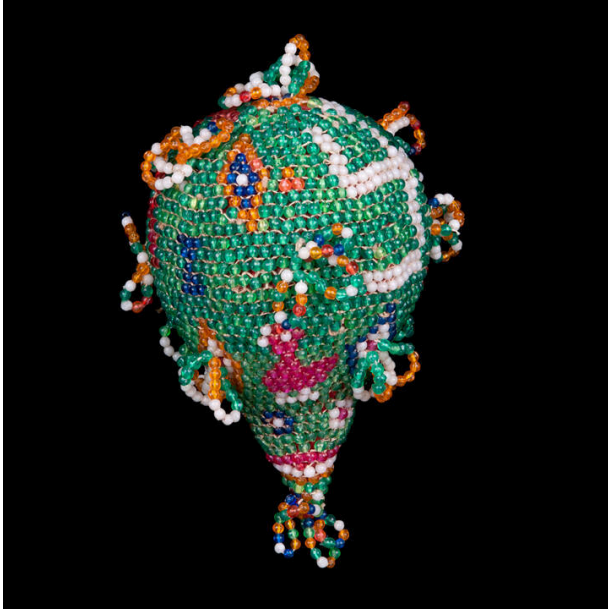


Basic Detail Report



Nariyal

Date

ca 1975

Primary Maker

Wife of Mepabhai Kalabhai

Medium

coconut, cotton, glass beads

Description

Multicolor plastic. Pear shaped w/double beaded tassels attached all over. Coconut(?) at bottom and top stuffed. Triple tassel hanger at top. Ceremonial coconut.

Dimensions

6 11/16 × 10 5/8 in. (17 × 27 cm)