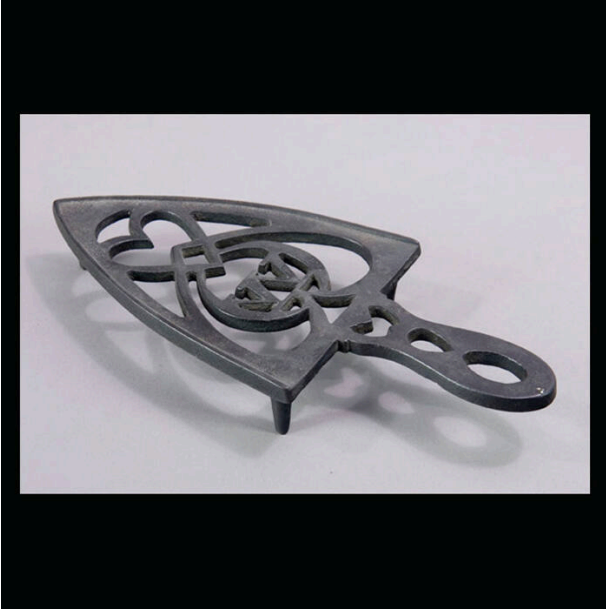


Basic Detail Report



4 1/8 × 9 1/16 in. (10.5 × 23 cm)

Trivet

Date

ca. 1800

Medium

Metal (Iron)

Description

Iron Trivet: Three-legged trivet for flat-iron, with "tulip bud" design and heart, and initial "W" in center. Cast iron. Triangular shape with handle extending from base of triangle

Dimensions