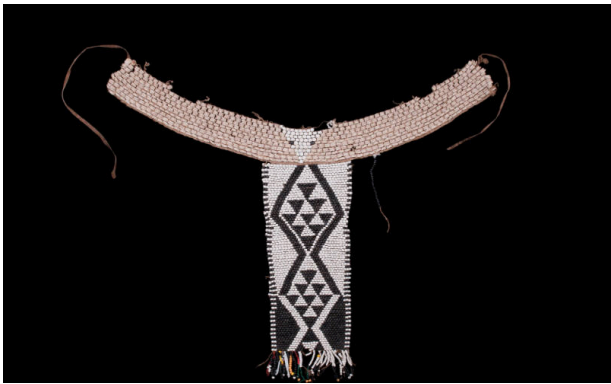


# Basic Detail Report

---



## Girdle

**Date**

ca. 1950

**Medium**

Animal hide, glass beads, ostrich eggshell beads

**Description**

Apron of black and white beads in geometric pattern with fringe of various color beads. Waistband is disks of ostrich shell with white bead triangle in front. Thongs for tying.

**Dimensions**

Overall: 26 3/16 x 16 9/16 in. (66.5 x 42 cm) Other (width; width is waistband): 26 3/16 in. (66.5 cm)