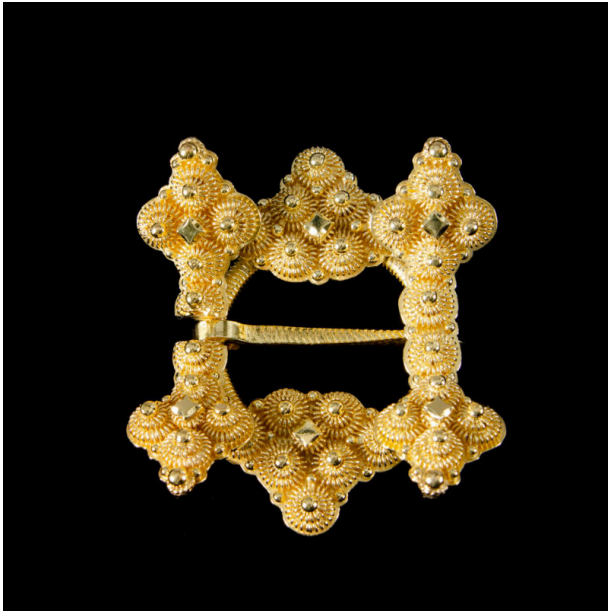


Basic Detail Report



Horn ring brooch with gold filigree

Date

2018

Primary Maker

Hasla AS

Medium

Gold wire over gold plated silver

Description

Four separate pieces are attached to a wire wrapped circular base. There are six areas of filigreed horns and a triangular pin. The mark on back reads: HASLA/9258.

Dimensions

Per M. Manier: $2 \frac{3}{16} \times 2 \frac{1}{16} \times \frac{3}{16}$ in. ($5.5 \times 5.2 \times 0.5$ cm)