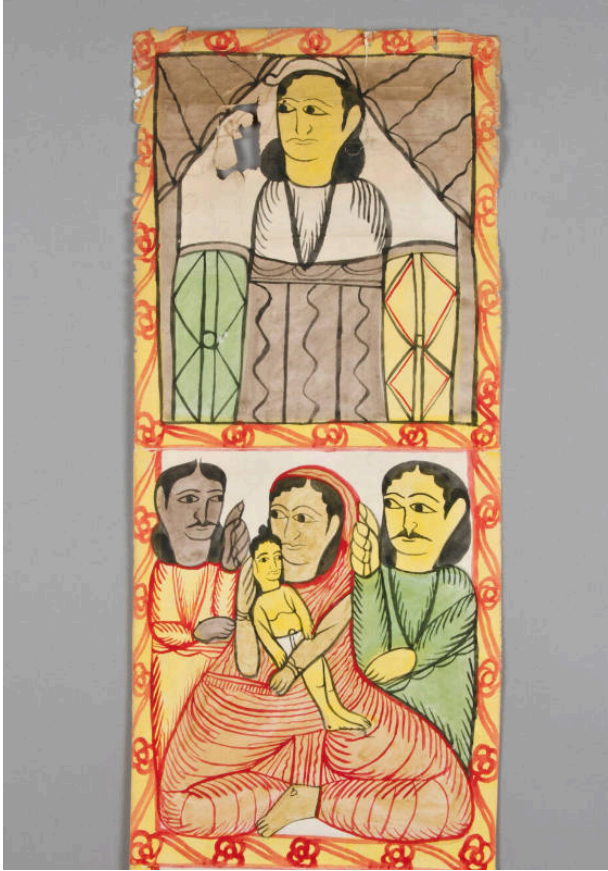


# Basic Detail Report

---



129 1/2 × 12 5/8 in. (329 × 32 cm)

## Pata

### Date

Circa 1980

### Medium

Paper, natural pigments, natural adhesives

### Description

Border, yellow ground, red flowers and red stripes. First panel, figure with yellow skin, long hair, standing under a structure. Large hole in the paper of the first panel. Second panel, four figures. Central figure (probably female) in orange dress holding second figure. Second figure, much smaller than others (probably child) wearing white loincloth. Left figure, (probably male) in yellow dress with very dark skin. Right figure, (probably male) in green dress with yellow skin. Panels sewn together with multiple colors of thread.

### Dimensions