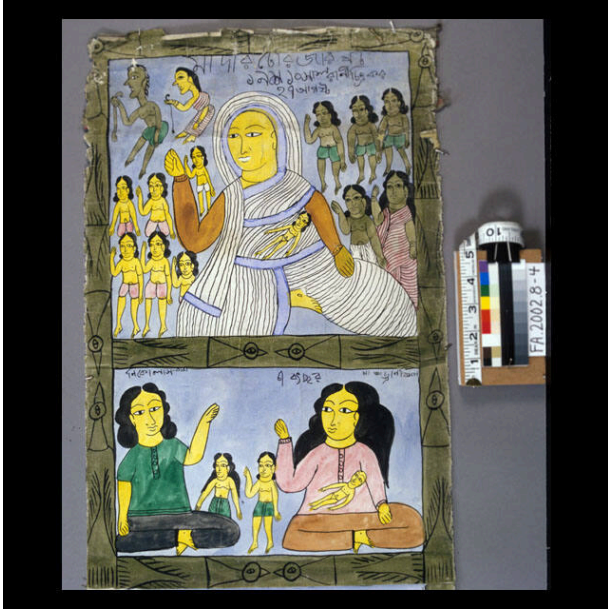


# Basic Detail Report

---



/blue robes.

## Dimensions

Overall: 106 9/16 x 13 7/8 in. (270.7 x 35.3 cm)

## Mother Theresa

### Date

Circa 2000, STAFF

### Primary Maker

Gurupada Chitrakar

### Medium

Paper, natural pigments

### Description

Thirteen panels depict the life of Mother Theresa in INDIA, including her illness and death. Framing is olive green, colors somewhat subdued in panels, including nun's white