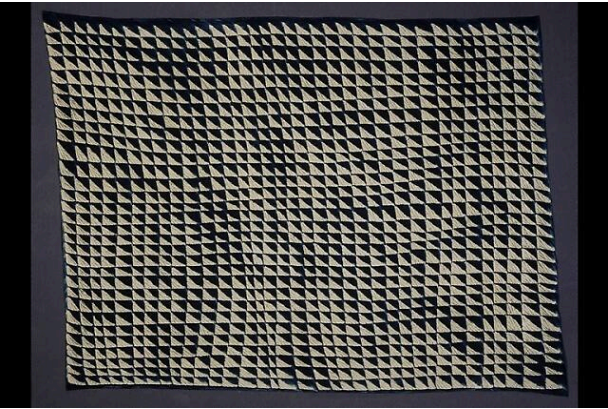


# Basic Detail Report

---



## Adire

### Date

20th century

### Medium

Cotton cloth with indigo dye

### Description

Repeat design, rows of blue and white triangles. The rows curve slightly and the triangles vary in size, creating an

undulating rhythm across the surface. Colors are indigo and white; made of handspun and woven cotton; decorated with a tritik stitch dyed technique. Warp 62" x weft 46"

### Dimensions

62 × 46 in. (157.4803 × 116.8402 cm)