

Basic Report



Title: Plate

Date: 19th century

Medium: Ceramic; tin-glazed earthenware with cobalt, antimony, copper, manganese, and iron in-glaze



Title: Plate

Date: 19th century

Medium: Ceramic; tin-glazed earthenware with cobalt in-glaze



Title: Plate

Date: 19th century

Medium: Ceramic; tin-glazed earthenware with cobalt, iron, copper, and antimony decoration



Title: Plate

Date: 19th century

Medium: Ceramic; earthenware with tin glaze and cobalt, antimony, iron, copper, manganese in-glaze



Title: Jar with Cover

Date: First half of the 18th century

Primary Maker: Artist unrecorded

Medium: Ceramic, glaze



Title: Albarelo

Date: 1700 - 1800

Primary Maker: Artist unrecorded

Medium: Ceramic (earthenware), glaze (tin glaze with cobalt in-glaze)



Title: Albarello
Date: 1750 - 1800
Primary Maker: Artist unrecorded
Medium: Ceramic (earthenware), glaze (tin glaze with cobalt in-glaze)



Title: Plate
Date: late 18th early 19th century
Medium: Earthenware w/ tin glaze and cobalt, copper, antimony, and iron in-glaze



Title: Plate
Primary Maker: Artist unrecorded
Medium: Earthenware, glaze



Title: Plate
Primary Maker: Artist unrecorded
Medium: Earthenware, glaze



Title: Jarro de vino
Date: c. 1850 - 1900
Primary Maker: Artist unrecorded
Medium: Ceramic, glaze



Title: Braserio
Date: early 15th century
Medium: Earthenware, tin glaze, cobalt in-glaze, copper-silver oxide overglaze



Title: Mortar
Date: 16th Century
Primary Maker: Artist unrecorded
Medium: earthenware, tin glaze, copper and manganese in-glaze



Title: Saltcellar
Date: Late 16th--Early 17th Century
Primary Maker: Artist unrecorded
Medium: earthenware, tin glaze, cobalt, antimony and iron in-glaze decoration



Title: Bowl
Medium: Ceramic, glaze, pigment



Title: Bowl
Medium: Ceramic, glaze, pigment



Title: Majolica Plate
Date: Mid-17th century
Primary Maker: Artist unrecorded
Medium: Earthenware, glaze



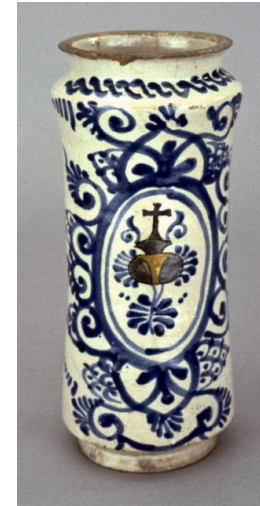
Title: Majolica Plate
Date: Mid-17th century
Primary Maker: Artist unrecorded
Medium: Earthenware, glaze



Title: Handled Jar
Date: Early 18th century
Primary Maker: Artist unrecorded
Medium: Earthenware with tin glaze and cobalt in-glaze paint



Title: Handled jar
Date: Second half of the 17th century
Primary Maker: Artist unrecorded
Medium: Earthenware, tin glaze, cobalt in-glaze



Title: Albarello
Date: Mid-18th century
Primary Maker: Artist unrecorded
Medium: Earthenware with tin glaze and cobalt, antimony, and iron in-glaze decoration



Title: Bowl
Date: Second half of 18th century
Primary Maker: Artist unrecorded
Medium: Earthenware with tin glaze and cobalt in-glaze decoration



Title: Jar
Date: Late 17th century
Primary Maker: Artist unrecorded
Medium: Earthenware with tin glaze and cobalt in-glaze



Title: Basin
Date: Late 18th century
Medium: Tin-glazed earthenware with tin in-glaze



Title: Jar
Date: 2nd half of 17th century
Primary Maker: Artist unrecorded
Medium: Earthenware, tin glaze, cobalt in-glaze



Title: Bottle
Date: Mid-18th century
Primary Maker: Artist unrecorded
Medium: Earthenware with tin glaze and cobalt in-glaze



Title: Handled jar
Date: Mid-18th century
Primary Maker: Artist unrecorded
Medium: Earthenware with tin glaze and cobalt in-glaze



Title: Jar
Date: Early 18th century
Primary Maker: Artist unrecorded
Medium: Earthenware with tin glaze and cobalt in-glaze



Title: Albarello
Date: Late 18th century
Primary Maker: Artist unrecorded
Medium: Tin glazed earthenware with cobalt in-glaze



Title: Plate
Date: Mid-18th century
Primary Maker: Artist unrecorded
Medium: Earthenware with tin glaze and cobalt blue in-glaze



Title: Albarello
Date: Late 18th century
Medium: Earthenware with tin glaze and cobalt in-glaze



Title: Jar
Date: Mid-18th century
Medium: Earthenware with tin glaze and cobalt blue in-glaze decoration



Title: Chocolate Jar
Date: c. 1700
Medium: Earthenware with tin glaze and cobalt in-glaze



Title: Albarelo

Date: Late 18th century
Medium: Tin-glazed earthenware with cobalt in-glaze



Title: Albarelo

Date: Second half of 18th century
Medium: Tin-glazed earthenware with cobalt in-glaze



Title: Charger

Date: Mid-18th century
Medium: Tin-glazed earthenware with cobalt in-glaze



Title: Albarelo

Date: Late 18th century
Medium: Tin-glazed earthenware with cobalt in-glaze



Title: Jar

Date: Late 18th century
Medium: Earthenware with tin glaze and cobalt in-glaze



Title: Tibor

Date: Early 18th century
Primary Maker: Artist unrecorded
Medium: Earthenware with tin glaze and cobalt in-glaze



Title: Jar

Date: c. 1700
Medium: Tin-glazed earthenware with cobalt in-glaze



Title: Jar

Date: Mid-18th century
Medium: Tin glazed earthenware with cobalt in-glaze



Title: Bowl

Date: Late 18th century
Medium: Tin-glazed earthenware with cobalt in-glaze



Title: Barril

Date: Late 18th century

Medium: Earthenware with tin glaze and cobalt in-glaze decoration



Title: Jar

Date: Late 18th century

Medium: Earthenware with tin glaze and cobalt in-glaze decoration



Title: Jar Lid

Date: Early 18th century

Medium: Tin-glazed earthenware with cobalt in-glaze



Title: Jar Lid

Date: Mid-18th century

Primary Maker: Artist unrecorded

Medium: Tin glazed-earthenware with cobalt in-glaze



Title: Jar Lid

Date: Late 18th century

Medium: Earthenware with tin glaze and cobalt in-glaze



Title: Albarelo

Date: Mid to late 18th century

Medium: Earthenware with tin glaze and cobalt in-glaze



Title: Albarelo

Date: Mid to late 18th century

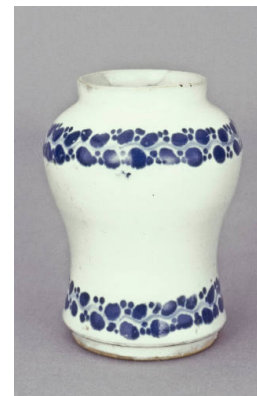
Medium: Earthenware with tin glaze and cobalt in-glaze



Title: Albarelo

Date: Mid-18th century

Medium: Earthenware with tin glaze and cobalt in-glaze



Title: Albarelo

Date: Second half 18th century

Medium: Earthenware with tin glaze and cobalt in-glaze



Title: Barril

Date: Mid-18th century

Medium: Earthenware with tin glaze and cobalt blue in-glaze



Title: Bacin

Date: First half, 18th century

Medium: Earthenware with tin glaze and cobalt in-glaze



Title: Albarelo

Date: Second half of 18th century

Primary Maker: Artist unrecorded

Medium: Earthenware with tin glaze and cobalt in-glaze



Title: Bottle

Date: Mid-late 18th century

Primary Maker: Artist unrecorded

Medium: Earthenware with tin glaze and cobalt in-glaze



Title: Basin

Date: Mid-18th century

Medium: Earthenware with tin glaze and cobalt in-glaze



Title: Jar

Date: Mid-18th century

Medium: Earthenware with tin glaze and cobalt underglaze



Title: Jar

Date: Mid-18th century

Medium: Earthenware with tin glaze and cobalt in-glaze decoration



Title: Plate

Date: Late 18th century

Medium: Tin-glazed earthenware with cobalt in-glaze



Title: Plate

Date: Late 18th century

Medium: Tin glazed-earthenware with cobalt in-glaze



Title: Plate

Date: Late 18th century

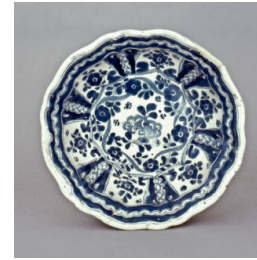
Medium: Tin-glazed earthenware with cobalt in-glaze



Title: Jar

Date: Late 17th century

Medium: Earthenware with tin glaze and cobalt in-glaze decoration



Title: Bowl

Date: Late 18th century

Medium: Tin-glazed earthenware with cobalt in-glaze



Title: Barril

Date: 19th century

Medium: Earthenware with tin glaze and cobalt in-glaze decoration



Title: Bowl

Date: Second half 18th century

Medium: Earthenware with tin glaze and cobalt in-glaze decoration



Title: Bowl

Date: Mid-18th century

Medium: Earthenware with tin glaze and cobalt in-glaze decoration



Title: Bandeja

Date: Late 18th century

Medium: Earthenware with tin glaze and cobalt in-glaze



Title: Plate

Date: Late 18th century

Medium: Tin-glazed earthenware with cobalt in-glaze



Title: Bandeja

Date: Early 19th century

Medium: Tin-glazed earthenware with cobalt in-glaze



Title: Plate
Date: Late 18th - early 19th century
Medium: Tin-glazed earthenware with cobalt, copper, antimony and iron in-glaze



Title: Bowl
Date: Late 18th century
Primary Maker: Artist unrecorded
Medium: Glazed earthenware



Title: Plate
Date: Early 19th century
Medium: Tin-glazed earthenware with copper and iron in-glaze



Title: Jardiniere
Date: Early 19th century
Primary Maker: Artist unrecorded
Medium: Glazed earthenware



Title: Jardiniere
Date: 1790 - 1850
Primary Maker: Artist unrecorded
Medium: Glazed earthenware



Title: Apothecary Jar
Date: Early 19th century
Primary Maker: Artist unrecorded
Medium: Glazed earthenware



Title: Apothecary Jar
Primary Maker: Artist unrecorded
Medium: Glazed earthenware



Title: Jardiniere
Date: c. 1880
Primary Maker: Artist unrecorded
Medium: Ceramic, glaze



Title: Jardiniere
Date: Mid-19th century
Primary Maker: Artist unrecorded
Medium: Ceramic, glaze



Title: Pitcher

Date: Late 18th - early 19th century

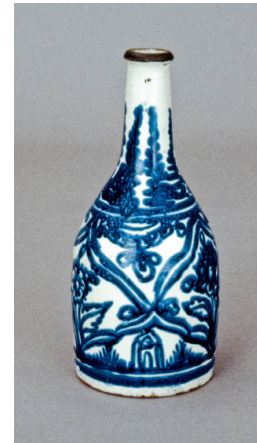
Medium: Tin-glazed earthenware with cobalt in-glaze



Title: Plate

Date: 2nd half of 19th century

Medium: Tin-glazed earthenware with cobalt in-glaze



Title: Wine Bottle

Date: Late 19th century

Primary Maker: Artist unrecorded

Medium: Ceramic, glaze



Title: Cup

Date: 1850 - 1900

Primary Maker: Artist unrecorded

Medium: Ceramic, glaze



Title: Bowl

Date: Late 18th - early 19th century

Medium: Tin-glazed earthenware with cobalt, copper, antimony, iron in-glaze



Title: Lebrillo

Date: 19th century

Medium: Tin-glazed earthenware



Title: Bowl

Date: Mid-19th century

Primary Maker: Artist unrecorded

Medium: Ceramic, glaze



Title: Bowl

Primary Maker: Artist unrecorded

Medium: Ceramic, glaze



Title: Bowl

Date: Mid-19th century

Primary Maker: Artist unrecorded

Medium: Ceramic, glaze



Title: Bowl
Date: Second half 19th century
Primary Maker: Artist unrecorded
Medium: Earthenware, glaze



Title: Bowl
Primary Maker: Artist unrecorded
Medium: Terracotta, glaze



Title: Jar
Date: 1680 - 1725
Medium: Tin-glazed earthenware with cobalt, copper, iron, antimony in-glaze



Title: Jar with lid
Date: 2000
Primary Maker: Talavera de la Reyna
Medium: Ceramic, paint, glaze



Title: Plate
Date: 19th Century
Primary Maker: Santiago Mellado
Medium: Ceramic



Title: Plate
Date: 19th century
Primary Maker: Santiago Mellado
Medium: Ceramic



Title: Jar, Apothecary
Primary Maker: Abelardo Linares Munoz
Medium: Ceramic



Title: Mortar
Date: 17th century
Primary Maker: Linares
Medium: Ceramic; tin-glazed earthenware with copper and manganese in-glaze



Title: Jar, pharmacy
Date: 18th century
Primary Maker: Linares
Medium: Ceramic



Title: Plate
Date: 18th c.
Primary Maker: Linares
Medium: Ceramic; tin-glazed earthenware with manganese in-glaze



Title: Bowl
Date: 18th century
Primary Maker: Rofor Valencia
Medium: Ceramic; tin-glazed earthenware with copper and manganese in-glaze



Title: Bowl
Date: 18th century
Primary Maker: Rofor Valencia
Medium: Ceramic; tin-glazed earthenware with copper and manganese in-glaze



Title: Ceramic Plate
Date: 17th century
Primary Maker: Rofor Valencia
Medium: Ceramic



Title: Plate
Date: 17th century
Primary Maker: Casa Maria Esclasans
Medium: ceramic



Title: Plate
Date: early 19th century
Primary Maker: Casa Maria Esclasans
Medium: Tin-glazed earthenware with cobalt in-glaze



Title: Cup
Date: 16th century
Primary Maker: Casa Maria Esclasans
Medium: Ceramic, metallic glaze



Title: Plate
Date: 18th century
Primary Maker: Artist unrecorded
Medium: Ceramic



Title: Bowl
Date: First half of 18th century
Medium: Ceramic; tin-glazed earthenware with cobalt, copper, antimony and iron in-glaze



Title: Botes (Drug Jars), Pair

Date: late 16th or early 17th century

Medium: Ceramic; tin-glazed earthenware with cobalt in-glaze



Title: Botes (Drug Jars), Pair

Date: late 16th or early 17th century

Medium: Ceramic, tin-glazed earthenware with cobalt in-glaze



Title: Serving Plate

Date: 19th century

Medium: Tin-glazed earthenware with iron in-glaze



Title: Plate

Date: 19th century

Medium: ceramic; earthenware with tin glaze and cobalt, copper, antimony, and iron in-glaze



Title: Majolica Plate

Date: 17th century

Medium: Ceramic



Title: Majolica Plate

Date: 17th century

Medium: Ceramic



Title: Bowl, Majolica

Date: ca. 1780

Medium: Ceramic; tin-glazed earthenware with copper and manganese in-glaze



Title: Plate

Date: early 19th century

Medium: Ceramic



Title: Bote, pharmacy jar

Date: late 17th c

Medium: Ceramic; tin-glazed earthenware with cobalt and antimony in-glaze



Title: Tazza

Date: First half of 18th c.

Medium: Tin-glazed earthenware with cobalt, copper, antimony, iron in-glaze



Title: Plate

Date: first half 18th c.

Medium: ceramic; tin-glazed earthenware with cobalt in-glaze



Title: Mortar

Date: late 17th and early 18th c.

Primary Maker: Aragon (?)
Medium: ceramic; tin-glazed earthenware with copper and manganese in-glaze



Title: Plate

Date: 16th c. or early 17th c.

Medium: ceramic; tin-glazed earthenware with cobalt, antimony, and iron in-glaze



Title: Bowl

Date: 19th century

Medium: Ceramic; earthenware with tin glaze and copper and manganese in-glaze



Title: Saltcellar (Salero)

Date: ca 1700

Medium: ceramic; tin-glazed earthenware with cobalt, antimony, and iron in-glaze



Title: Basin

Date: 18th-19th century

Medium: Ceramic; earthenware with tin glaze and cobalt in-glaze



Title: Bowl

Date: early 19th century

Medium: Ceramic; tin-glazed earthenware with copper, antimony, iron in-glaze



Title: Plate

Date: Late 16th c. - early 17th c.

Medium: ceramic; tin-glazed earthenware with cobalt in-glaze



Title: Plate

Date: 19th c

Medium: ceramic; tin-glazed earthenware with cobalt in-glaze



Title: Basin

Date: 18th centry

Primary Maker: Artist unrecorded
Medium: ceramic



Title: Plate

Date: 19th c.

Medium: ceramic; earthenware with tin glaze and cobalt in-glaze



Title: Salvilla

Date: first half 18th century

Medium: ceramic; tin-glazed earthenware with cobalt, copper, antimony and iron in-glaze



Title: Albarello or Pharmacy Jar

Date: late 17th or early 18th c.

Medium: ceramic; tin-glazed earthenware with cobalt in-glaze



Title: Jarro de Vino

Date: c. 1850 - 1900

Primary Maker: Artist unrecorded
Medium: Ceramic, glaze



Title: Bowl

Date: 18th century

Medium: ceramic; tin-glazed earthenware with copper and manganese in-glaze



Title: Basin

Date: early 19th century

Medium: Ceramic; earthenware with tin glaze and copper and manganese in-glaze



Title: Bowl

Primary Maker: Artist unrecorded



Title: Plate
Date: 19th c.
Primary Maker: Artist unrecorded



Title: Pharmaceutical Jar
Date: 17th or early 18th century
Primary Maker: Artist unrecorded



Title: Plate
Date: 19th century
Medium: Ceramic; earthenware with tin glaze and cobalt in-glaze



Title: Bowl
Date: early 20th century
Primary Maker: Artist unrecorded



Title: Bandeja
Date: late 18th century
Medium: Earthenware w/ tin glaze and cobalt in-glaze



Title: Large Jar
Date: 3rd quarter 19th century
Primary Maker: Artist unrecorded
Medium: Ceramic



Title: Medium Jar
Date: late 19th century
Medium: ceramic; tin-glazed earthenware w/ cobalt, copper, antimony, and iron in-glaze



Title: Round Jar
Date: late 19th c
Medium: ceramic; tin-glazed earthenware w/ cobalt, antimony, copper and iron in-glaze



Title: Bowl
Date: Late 19th century
Primary Maker: Artist unrecorded
Medium: Ceramic, glaze



Title: Large Bowl
Date: 3rd quarter 19th century
Primary Maker: Artist unrecorded



Title: Deep Plate
Date: mid 19th century
Primary Maker: Dolores Hidalgo
Medium: Ceramic, glaze



Title: Pitcher
Date: late 19th century
Primary Maker: Artist unrecorded



Title: Ink Well
Date: 17th century
Medium: ceramic; tin-glazed earthenware with cobalt in-glaze decoration



Title: Olla or Sugar Bowl with Lid
Date: Late 19th century
Medium: Earthenware with tin glaze and copper, antimony and iron in-glaze decoration



Title: Bowl
Date: 18th century
Medium: Ceramic (Majolica)



Title: Bowl
Date: pre 1740
Primary Maker: Artist unrecorded
Medium: Earthenware w/ tin glaze and cobalt in-glaze decoration



Title: Jar with Lid
Date: late 19th century
Medium: tin-glazed earthenware with copper, antimony and iron in-glaze



Title: Pitcher
Date: late 19th century
Medium: ceramic; tin-glazed earthenware w/ cobalt, antimony, copper and iron in-glaze



Title: Wash Bowl

Date: third quarter 19th century

Primary Maker: Artist unrecorded



Title: Bowl

Date: late 19th century

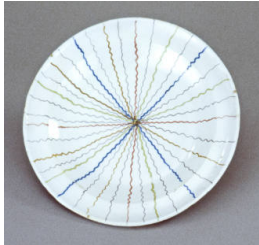
Medium: ceramic; tin-glazed earthenware w/ cobalt, antimony, copper and iron in-glaze



Title: Bowl

Date: first half 19th century

Primary Maker: Artist unrecorded



Title: Plates, Majolica, Pair

Primary Maker: Artist unrecorded

Medium: tin glaze



Title: Jug

Date: 19th century

Primary Maker: Artist unrecorded

Medium: Ceramic, glaze



Title: Pot

Date: 19th century

Primary Maker: Artist unrecorded

Medium: Ceramic, glaze



Title: Bowl

Date: mid 17th century, staff

Medium: ceramic; tin-glazed earthenware with copper oxide overglaze



Title: Jar with two handles

Date: ca. 2000

Primary Maker: Antonio Froilan

Medium: tin-glazed earthenware



Title: Basin

Date: c. 1740s - 1750s

Medium: Earthenware with tin glaze and cobalt in-glaze decoration



Title: Tibor

Date: Late 17th century

Medium: Ceramic, glaze



Title: Bowl

Date: 18th century

Medium: Ceramic;
earthenware with tin glaze
and copper oxide overglaze



Title: Salero o tintero

Date: late 16th, early 17th
century

Primary Maker: Jose Luis
Martin Nieto

Medium: Ceramic; tin-
glazed earthenware with
cobalt, antimony and iron
in-glaze



Title: Plate

Date: early 19th c

Medium: Ceramic; tin-
glazed earthenware with
cobalt in-glaze



Title: Plate

Date: 19th c.

Medium: Earthenware, tin
glaze, cobalt, iron, copper