

# Basic Report

---



**Title:** Qhapac Qolla  
**Dance Mask**  
**Date:** 1954  
**Primary Maker:** Artist  
unrecorded  
**Medium:** Wool



**Title:** Wincha  
**Date:** Late 19th - early  
20th century  
**Primary Maker:** Artist  
unrecorded  
**Medium:** Wool, glass beads



**Title:** Ch'uspa  
**Date:** Mid-20th century  
**Primary Maker:** Artist  
unrecorded  
**Medium:** Wool



**Title:** Bag  
**Date:** Late 19th - early  
20th century  
**Primary Maker:** Artist  
unrecorded  
**Medium:** Wool, metal coins



**Title:** Ponchito  
**Date:** Early to mid-19th  
century  
**Primary Maker:** Artist  
unrecorded  
**Medium:** Alpaca fiber



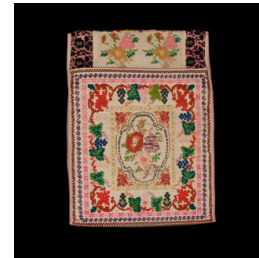
**Title:** Woman's Folding  
Hat  
**Date:** c. 1965  
**Medium:** Wool, fabric,  
plastic sequins, metal coins  
and sequins, straw or  
cardboard



**Title:** Costale  
**Date:** Mid-20th century  
**Primary Maker:** Artist  
unrecorded  
**Medium:** Llama fiber,  
sheep's wool



**Title:** Chullu  
**Date:** c. 1958  
**Primary Maker:** Artist  
unrecorded  
**Medium:** Wool



**Title:** Alforja  
**Date:** 1917  
**Primary Maker:** Artist  
unrecorded  
**Medium:** Wool, cotton, silk,  
metallic thread



**Title:** Chumbis  
**Date:** 1959  
**Primary Maker:** Artist  
unrecorded  
**Medium:** Sheep wool,  
cotton



**Title:** Hat  
**Date:** c. 1960  
**Medium:** Straw, wool,  
cotton, embroidery thread



**Title:** Man's Poncho  
**Date:** c. 1920  
**Primary Maker:** Artist  
unrecorded  
**Medium:** Wool



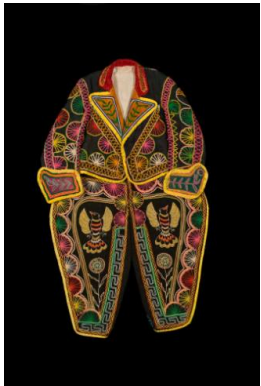
**Title:** Men's arm  
warmers  
**Date:** c. 1960  
**Medium:** Wool, aniline dyes



**Title:** Alforja  
**Date:** c. 1960  
**Primary Maker:** Artist  
unrecorded  
**Medium:** Cotton, wool



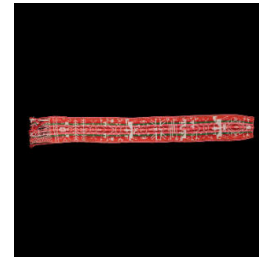
**Title:** Monedero  
**Date:** c. 1960  
**Primary Maker:** Artist  
unrecorded  
**Medium:** Wool



**Title:** Man's Chuta  
Carnival Costume  
Jacket  
**Date:** c. 1960  
**Primary Maker:** Artist  
unrecorded  
**Medium:** Wool, cotton,  
rayon



**Title:** Ch'uspa  
**Date:** Late 20th century  
**Primary Maker:** Artist  
unrecorded  
**Medium:** Wool  
(commercially spun)



**Title:** BELT  
**Date:** Early 20th century  
**Primary Maker:** Artist  
unrecorded  
**Medium:** Wool



**Title:** DOLL  
**Date:** ca. 1930  
**Primary Maker:** Artist unrecorded  
**Medium:** Wool, metal coins, synthetic dyes



**Title:** Monedero  
**Date:** ca. 1958  
**Primary Maker:** Artist unrecorded  
**Medium:** Wool



**Title:** Belt  
**Date:** ca. 1965  
**Primary Maker:** Artist unrecorded  
**Medium:** Cotton



**Title:** Poncho  
**Date:** ca. 1965  
**Primary Maker:** Artist unrecorded  
**Medium:** Cotton



**Title:** Our Lady of Carmen  
**Date:** Mid 20th century  
**Primary Maker:** Nuns of Santa Teresa Convent  
**Medium:** Fiber, paper



**Title:** Upper garment, mantle  
**Date:** ca. 1900  
**Primary Maker:** Artist unrecorded  
**Medium:** Vicuna fiber



**Title:** Bag  
**Date:** Mid-20th century  
**Primary Maker:** Artist unrecorded  
**Medium:** Wool, cotton



**Title:** Woman's Festival Hat  
**Date:** Mid-20th Century  
**Medium:** Wool, sequins, glass beads



**Title:** Headpiece for Dance costume  
**Date:** Early 20th century  
**Medium:** Wood, tropical bird feathers, natural glue



**Title:** Headpiece for dance costume  
**Date:** Early 20th century  
**Medium:** Wood, tropical bird feathers, paper, natural glue



**Title:** Chacana  
**Date:** Early 20th century  
**Medium:** Palm wood, tropical bird feathers, fiber string, natural glues



**Title:** Man's Ikat Poncho  
**Date:** Late 19th - early 20th century  
**Medium:** Wool, dyes



**Title:** Man's Belt  
**Date:** c. 1920  
**Primary Maker:** Artist unrecorded  
**Medium:** Leather, metal (silver, brass)



**Title:** Dance cape with San Martín and an airplane  
**Date:** c. 1960  
**Primary Maker:** attributed to Capacyachi workshop  
**Medium:** Cardboard base, cotton, cotton and silk embroidery thread, metal sequins



**Title:** Dance Cape  
**Date:** c. 1960  
**Primary Maker:** Santa Cruz Capacyachi  
**Medium:** Cardboard base, cotton, silk and cotton embroidery, sequins



**Title:** Cape  
**Date:** Mid-19th century  
**Medium:** Alpaca warp and weft



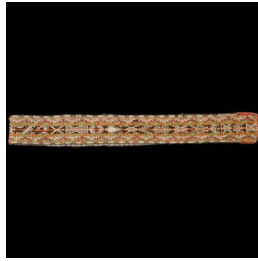
**Title:** Cape  
**Date:** Mid to late 19th c., donor  
**Medium:** Alpaca, wool



**Title:** Bag  
**Date:** 1985  
**Medium:** Wool fiber, glass buttons and beads



**Title:** Chumbi  
**Date:** Mid-20th century,  
staff  
**Medium:** Sheep wool



**Title:** Chumbi  
**Date:** Mid-20th century,  
staff  
**Primary Maker:** Artist  
unrecorded  
**Medium:** Alpaca and sheep  
wool



**Title:** Shawl  
**Date:** circa 1960  
**Primary Maker:** Artist  
unrecorded  
**Medium:** Rayon,  
embroidery thread



**Title:** Village Scene  
**Date:** 2007  
**Primary Maker:** Chijnay  
Cooperative  
**Medium:** Wool, dyes



**Title:** Chullu  
**Date:** 2002  
**Primary Maker:** Artist  
unrecorded  
**Medium:** Llama fiber, glass  
beads



**Title:** Pachamama bags  
**Date:** Early 20th century  
**Primary Maker:** Artist  
unrecorded  
**Medium:** Wool, metal



**Title:** Carnival Hat  
**Date:** ca. 1955  
**Primary Maker:** Artist  
unrecorded  
**Medium:** Wool felt, metal,  
cardboard, plastic, glass,  
cotton, paper, silk



**Title:** Leather belt w/  
bells  
**Date:** Mid 20th century  
**Primary Maker:** Artist  
unrecorded  
**Medium:** Leather, metal  
(bronze)



**Title:** Coin bag in form  
of a llama  
**Date:** Early 20th century  
**Primary Maker:** Artist  
unrecorded  
**Medium:** Wool yarn, silver  
coins





**Title:** Woman's hat  
**Date:** Early 20th century  
**Primary Maker:** Artist unrecorded  
**Medium:** Straw, wool, metallic ribbon, cotton ribbon



**Title:** Paño, Shawl  
**Date:** c. 1950  
**Primary Maker:** Artist unrecorded  
**Medium:** Cotton, dye



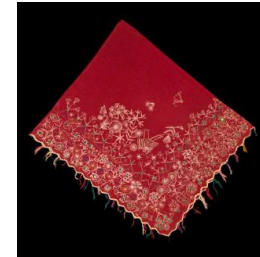
**Title:** Carrying Bag, Shigra  
**Date:** 2006  
**Medium:** Agave fiber (Agave americana), dye



**Title:** Paño, shawl  
**Date:** 1970  
**Primary Maker:** Artist unrecorded  
**Medium:** Cotton, indigo dye



**Title:** Dress, hat  
**Date:** ca. 2000  
**Primary Maker:** Artist unrecorded  
**Medium:** Wool, cotton, rayon, glass, plastic



**Title:** Embroidered shawl  
**Date:** ca. 1980  
**Primary Maker:** Artist unrecorded  
**Medium:** Wool, cotton, plastic sequins



**Title:** Chullu  
**Date:** Late 20th century  
**Primary Maker:** Artist unrecorded  
**Medium:** Wool



**Title:** Chullu  
**Date:** Late 20th century  
**Medium:** Wool



**Title:** Chullu  
**Date:** Mid 20th century  
**Primary Maker:** Artist unrecorded  
**Medium:** Wool



**Title: Sombrero**  
**Date:** Mid-19th century  
**Primary Maker:** Artist  
unrecorded  
**Medium:** Wool, cotton



**Title: Chaqueta**  
**Date:** Mid-19th century  
**Primary Maker:** Artist  
unrecorded  
**Medium:** Cotton, wool



**Title: Pantalón**  
**Date:** Mid-19th century  
**Primary Maker:** Artist  
unrecorded  
**Medium:** Wool, cotton



**Title: Ch'uspa**  
**Date:** Mid-19th century  
**Primary Maker:** Artist  
unrecorded  
**Medium:** Wool



**Title: Ponchito**  
**Date:** Mid-19th century  
**Primary Maker:** Artist  
unrecorded  
**Medium:** Wool



**Title: Chumpi**  
**Date:** Mid-19th century  
**Primary Maker:** Artist  
unrecorded  
**Medium:** Wool, cotton



**Title: Chullo**  
**Date:** Mid-19th century  
**Primary Maker:** Artist  
unrecorded  
**Medium:** Cotton



**Title: Phanta or Montera**  
**Date:** Early 20th century  
**Primary Maker:** Artist  
unrecorded  
**Medium:** Cotton, wool



**Title: Blusa**  
**Date:** Early 20th century  
**Primary Maker:** Artist  
unrecorded  
**Medium:** Wool, poly-cotton  
thread



**Title:** Urku  
**Date:** Early 20th century  
**Primary Maker:** Artist unrecorded  
**Medium:** Wool



**Title:** Ahuayo  
**Date:** Early 20th century  
**Primary Maker:** Artist unrecorded  
**Medium:** Wool



**Title:** Ahuayo  
**Date:** Early 20th century  
**Primary Maker:** Artist unrecorded  
**Medium:** Wool



**Title:** Hauka  
**Date:** Early 20th century  
**Primary Maker:** Artist unrecorded  
**Medium:** Wool



**Title:** Mangas  
**Date:** Early 20th century  
**Primary Maker:** Artist unrecorded  
**Medium:** Wool, cotton, plastic, synthetic fiber, glass



**Title:** Tupu, spoon shape  
**Date:** Early 20th century  
**Primary Maker:** Artist unrecorded  
**Medium:** Metal (silver)



**Title:** Lliclla  
**Date:** Early 20th century  
**Primary Maker:** Artist unrecorded  
**Medium:** Wool



**Title:** Sombrero  
**Date:** Early to mid-20th century  
**Primary Maker:** Artist unrecorded  
**Medium:** Wood or straw, wool, metal coins and sequins, glass, cotton



**Title:** Ch'uspa  
**Date:** Mid-20th century  
**Medium:** Sheep wool, cotton





**Title: Chullu**

**Date:** Third quarter, 20th century

**Primary Maker:** Artist unrecorded

**Medium:** Acrylic yarn



**Title: Chullu**

**Date:** ca. 1980

**Primary Maker:** Artist unrecorded

**Medium:** Wool (sheep)

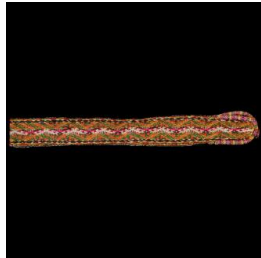


**Title: Chuspa**

**Date:** mid-20th century

**Primary Maker:** Artist unrecorded

**Medium:** Alpaca fiber, wool

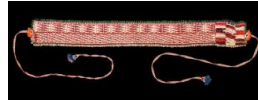


**Title: Belt**

**Date:** Mid-20th century, staff

**Primary Maker:** Artist unrecorded

**Medium:** Alpaca and sheep's wool



**Title: Headband**

**Date:** Late 19th - early 20th century

**Medium:** Wool, glass beads



**Title: Headband**

**Date:** Late 19th - early 20th century

**Primary Maker:** Artist unrecorded

**Medium:** Wool, glass beads



**Title: Cap**

**Date:** 1979

**Primary Maker:** Presentacion Mamani Yucra

**Medium:** Wool



**Title: Paño**

**Date:** c. 1975

**Primary Maker:** Artist unrecorded

**Medium:** Silk, embroidery thread



**Title: Hat**

**Date:** ca. 1960

**Primary Maker:** Artist unrecorded

**Medium:** Straw, wool, embroidery thread



**Title:** Bag  
**Date:** Late 19th century  
**Primary Maker:** Artist unrecorded  
**Medium:** Alpaca, wool



**Title:** Corpus Christi Dance Costume Headdress  
**Date:** c. 1950  
**Primary Maker:** Artist unrecorded  
**Medium:** Wood, metal (tin, coins), glass, leather, wool felt, feathers, plastic



**Title:** Halter  
**Date:** Mid-20th century  
**Primary Maker:** Artist unrecorded  
**Medium:** Wool, metal



**Title:** Neck Ornament for Llama  
**Date:** Mid-20th century  
**Primary Maker:** Artist unrecorded  
**Medium:** Sheep wool, metal (bronze)



**Title:** Devil or Diablo Costume Cape  
**Date:** 2000  
**Primary Maker:** Gregorio Flores  
**Medium:** Fabric, glass beads, plastic sequins, embroidery thread



**Title:** Woman's shawl (Paño)  
**Date:** 2008  
**Primary Maker:** Artist unrecorded  
**Medium:** Cotton



**Title:** Montera  
**Date:** 2007  
**Primary Maker:** Artist unrecorded  
**Medium:** Cotton canvas, synthetic lace ribbon, paint



**Title:** Hat (montera)  
**Date:** ca. 2005  
**Primary Maker:** Artist unrecorded  
**Medium:** Wool, synthetic fabric



**Title:** Caypai and phusca  
**Date:** 2007  
**Primary Maker:** Pompeyo Berrocal Evanán  
**Medium:** Wood, wool



**Title:** Qhapac Qolla Dance Hat  
**Date:** 2008  
**Primary Maker:** Artist unrecorded  
**Medium:** Cardboard, fabric, glass, plastic



**Title:** Mestiza Ccoyacha Dance Hat  
**Date:** 2008  
**Primary Maker:** Artist unrecorded  
**Medium:** Cardboard, fabric, glass beads, plastic ornaments



**Title:** Woman's manta (mantle)  
**Date:** 2008  
**Primary Maker:** Fidelia Callañaupa Quispe  
**Medium:** Alpaca fiber, sheep's wool



**Title:** Skirt  
**Date:** 2008  
**Primary Maker:** Ciriaco Quispe Auccacusi  
**Medium:** Wool



**Title:** Jabona  
**Date:** 2008  
**Primary Maker:** Ciriaco Quispe Auccacusi  
**Medium:** Alpaca fiber cotton, metal, plastic



**Title:** Camisa, kurpino  
**Date:** 2008  
**Primary Maker:** Ciriaco Quispe Auccacusi  
**Medium:** Cotton



**Title:** Hat  
**Date:** 2008  
**Primary Maker:** Ciriaco Quispe Auccacusi  
**Medium:** Alpaca fiber, vegetal fiber, cotton trim



**Title:** Hat, Montero  
**Date:** ca. 2005  
**Medium:** Wool, paint



**Title:** Embroidered Hat  
**Date:** Late 20th century  
**Primary Maker:** Artist unrecorded  
**Medium:** Wool felt, cotton, plastic sequins



**Title: Vest**

**Date:** Late 20th century

**Primary Maker:** Artist  
unrecorded

**Medium:** Cotton, metal

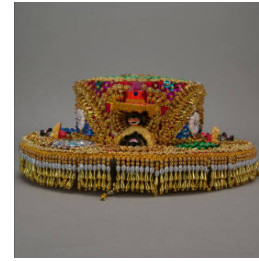


**Title: Festival Hat**

**Date:** 2008

**Primary Maker:** Artist  
unrecorded

**Medium:** Canvas, paint,  
satin ribbon, vinyl, glue,  
cotton



**Title: Qhapac Negra  
Dance Costume Hat**

**Date:** 2006

**Medium:** Synthetic fabrics,  
cardboard, plastic, glass,  
metal



**Title: Llama collar with  
bells**

**Date:** Late 20th century

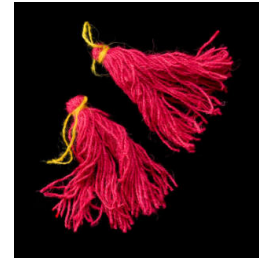
**Medium:** Llama and sheep  
wool, metal (bronze)



**Title: Llama ear  
ornaments, red**

**Date:** 2008

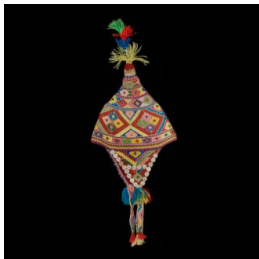
**Medium:** Wool



**Title: Llama ear  
ornaments, hot pink**

**Date:** 2008

**Medium:** Wool



**Title: Chullu**

**Date:** Late 20th century

**Medium:** Wool, plastic,  
glass



**Title: Chullu**

**Date:** 1989

**Medium:** Wool



**Title: Chullu**

**Date:** ca. 1980

**Medium:** Wool



**Title:** Woman's white hat with ribbon  
**Date:** Late 20th century  
**Medium:** Plant fiber, paint, synthetic satin ribbon



**Title:** Chola woman's black felt hat  
**Date:** 2006  
**Primary Maker:** Artist unrecorded  
**Medium:** Wool felt, metal, shell, silk



**Title:** Woman's brown felt hat  
**Date:** 2006  
**Primary Maker:** Artist unrecorded  
**Medium:** Wool, polyester satin



**Title:** Woman's embroidered hat  
**Date:** 2005  
**Medium:** Straw, wool, cotton



**Title:** Woman's hat with sequins and beads  
**Date:** 2007  
**Medium:** Wool, plastic sequins, glass beads, cotton, metal wire



**Title:** Qhapac Negra dance costume breast piece  
**Date:** 2009  
**Primary Maker:** Artist unrecorded  
**Medium:** Synthetic fabric, plastic, metal, glass, cotton, cardboard



**Title:** Qhapac Negra dance costume apron  
**Date:** 2009  
**Primary Maker:** Artist unrecorded  
**Medium:** Synthetic fabric, plastic, metal, glass, cotton



**Title:** Qhapac Negra dance costume epaulettes  
**Date:** 2009  
**Primary Maker:** Artist unrecorded  
**Medium:** Polyester ribbon, metal, glass mirror, plastic



**Title:** Qhapac Negra dance costume shoe ornaments  
**Date:** 2009  
**Primary Maker:** Artist unrecorded  
**Medium:** Polyester ribbon, metal, plastic